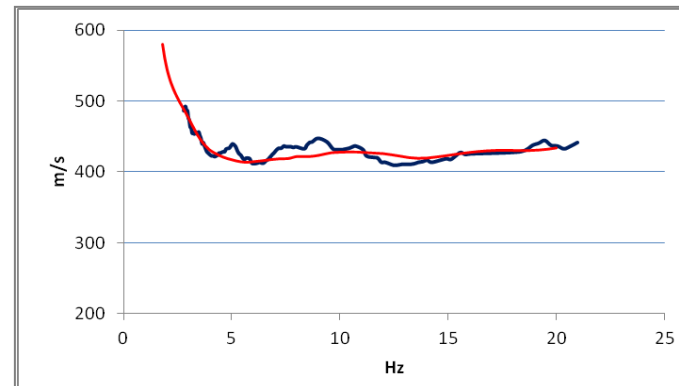
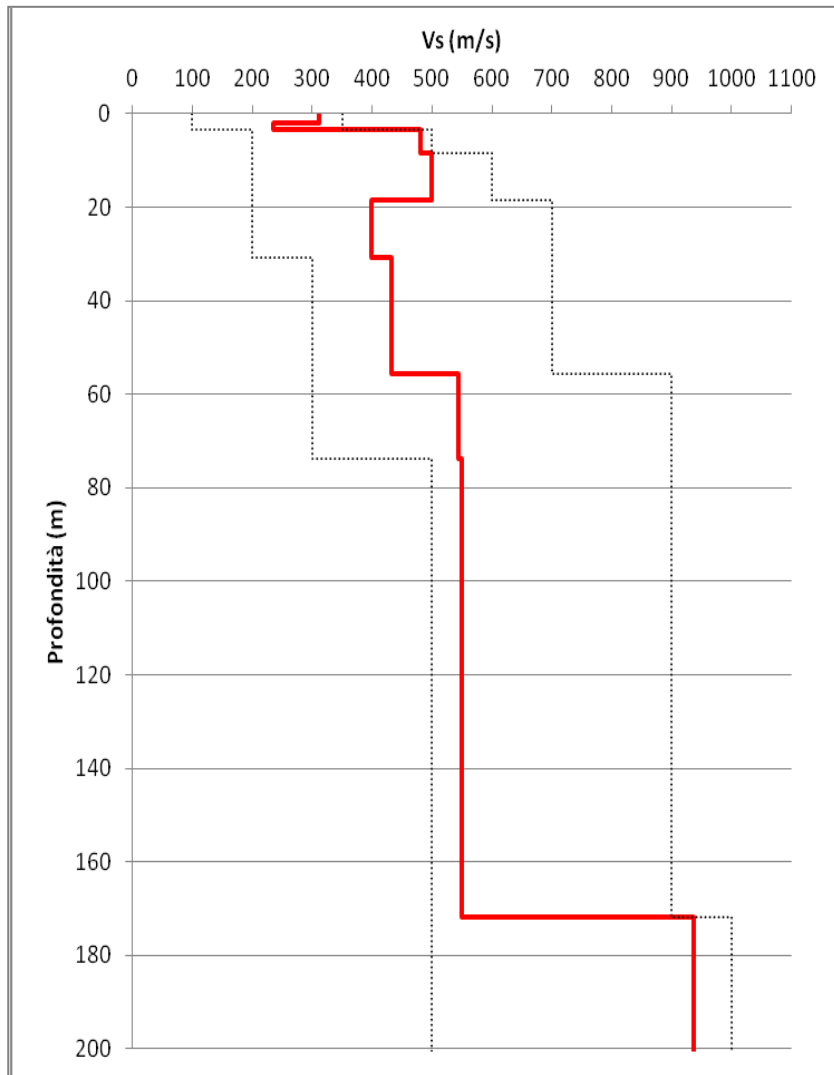
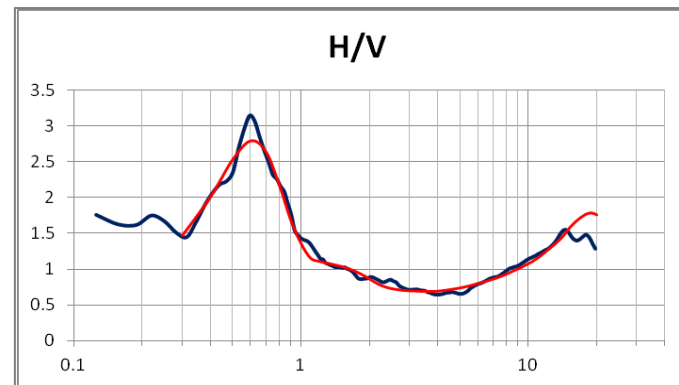


Profilo di Vs ESAC 1 Cerbaia



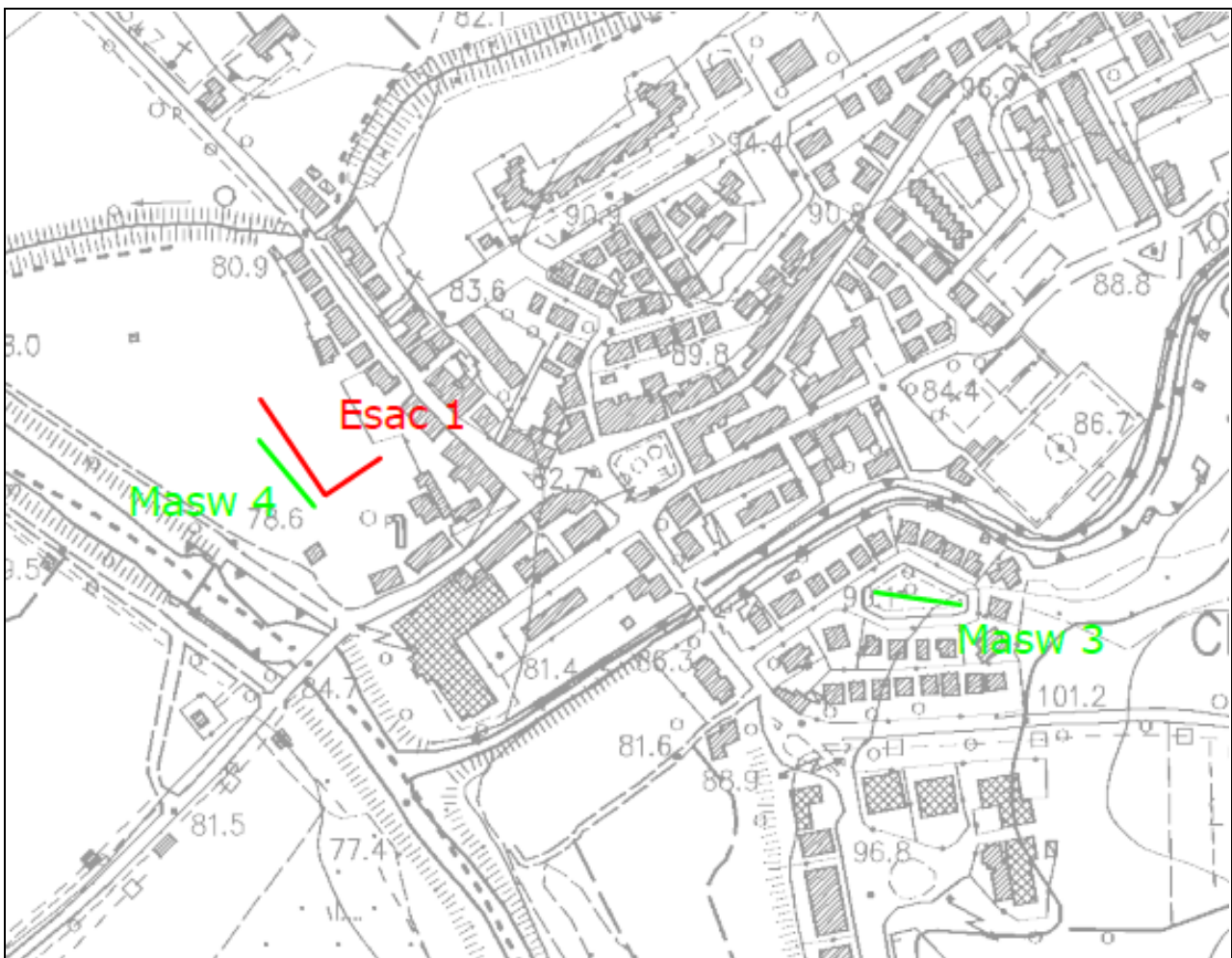
Match curva di dispersione
teorica /sperimentale
Array



Match curva di dispersione
teorica /sperimentale
HVSR

Modello monodimensionale Esac 1 Cerbaia

spessore (m)	Vp(m/s)	Vs(m/s)	ro(kg/m ³)	profondità	Vs medie
1.88	2437.64	311.14	1512.22	0.00	311.14
1.60	1203.23	235.63	2831.87	1.88	271.17
4.87	1475.56	480.65	1672.53	3.47	363.65
10.00	1499.02	499.51	1000.00	8.34	426.96
12.49	2480.45	398.93	1999.02	18.34	415.14
24.68	2421.80	432.16	1371.46	30.83	422.54
18.29	1962.37	543.40	1428.15	55.52	447.19
97.89	2224.58	550.05	1624.63	73.81	500.56
559.24	1408.60	937.44	1763.93	171.69	777.95
0.00	2840.86	1257.58	2554.25	730.93	777.95



UBICAZIONE ESAC CERBAIA

scala 1:5000